

**T.U.**

**MATERIA PURA,  
PURO COLORE**

PURE MATERIAL, PURE COLOUR  
REINE MATERIE, REINE FARBE  
LA MATIÈRE À L'ÉTAT PUR, PURE COULEUR



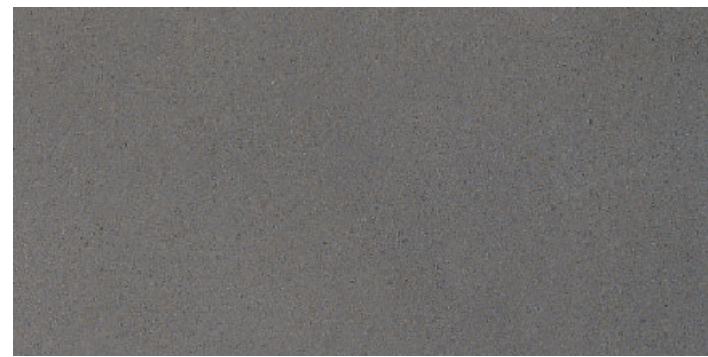
15 Moka 30x60 - 12"x24"  
15 Moka 10x60 - 4"x24"  
Naturale/Rettificato



T.U. 01 COLD WHITE



T.U. 03 GREY



T.U. 05 ANTHRACITE



T.U. 07 COLD BLACK



T.U. 11 WARM WHITE



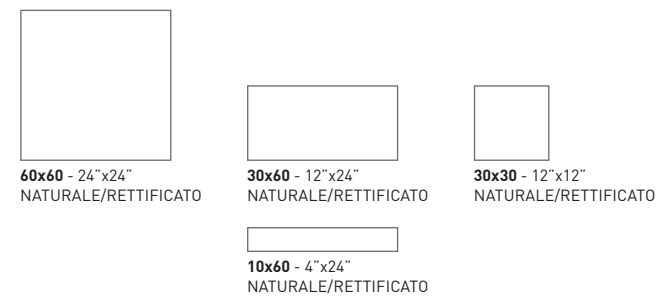
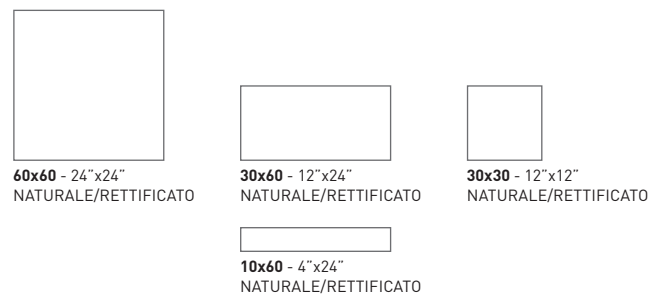
T.U. 13 HAVANA



T.U. 15 MOKA



T.U. 17 WARM BLACK



**NATURALE/RETTIFICATO**

Unpolished/Rectified - Matt/Rektifiziert - Naturel/Rectifié

60x60 - 24"x24"	30x60 - 12"x24"	10x60 - 4"x24"	30x30 - 12"x12"
TU6001R 01 Cold White	TU3601R 01 Cold White	TU1601R 01 Cold White	TU3001R 01 Cold White
TU6003R 03 Grey	TU3603R 03 Grey	TU1603R 03 Grey	TU3003R 03 Grey
TU6005R 05 Anthracite	TU3605R 05 Anthracite	TU1605R 05 Anthracite	TU3005R 05 Anthracite
TU6007R 07 Cold Black	TU3607R 07 Cold Black	TU1607R 07 Cold Black	TU3007R 07 Cold Black

**7,5x60 - 3"x24"**



Battiscopa - Bullnose  
Sockel - Plinthe

TUB601R 01 Cold White
TUB603R 03 Grey
TUB605R 05 Anthracite
TUB607R 07 Cold Black

**NATURALE/RETTIFICATO**

Unpolished/Rectified - Matt/Rektifiziert - Naturel/Rectifié

60x60 - 24"x24"	30x60 - 12"x24"	10x60 - 4"x24"	30x30 - 12"x12"
TU6011R 11 Warm White	TU3611R 11 Warm White	TU1611R 11 Warm White	TU3011R 11 Warm White
TU6013R 13 Havana	TU3613R 13 Havana	TU1613R 13 Havana	TU3013R 13 Havana
TU6015R 15 Moka	TU3615R 15 Moka	TU1615R 15 Moka	TU3015R 15 Moka
TU6017R 17 Warm Black	TU3617R 17 Warm Black	TU1617R 17 Warm Black	TU3017R 17 Warm Black

**7,5x60 - 3"x24"**



Battiscopa - Bullnose  
Sockel - Plinthe

TUB611R 11 Warm White
TUB613R 13 Havana
TUB615R 15 Moka
TUB617R 17 Warm Black



03 Grey 60x60 - 24"x24"  
Naturale/Rettificato

**gres+**  
DESIGN PERFORMANCE

**GRES PORCELLANATO**

Porcelain Stoneware - Feinsteinzeug - Grès Cérame  
EN 14411:2012 ANNEX G GROUP BIa UGL

<input checked="" type="checkbox"/>	Pavimento - Floor coverings Bodenbeläge - Sol	<input checked="" type="checkbox"/>	Traffico leggero Light traffic areas - Geringe Begehungsfrequenz Zones à trafic léger
<input checked="" type="checkbox"/>	Rivestimento - Wall coverings Wandbeläge - Faïence	<input checked="" type="checkbox"/>	Traffico pesante Heavy traffic areas - Starke Begehungsfrequenz Zones à trafic intense
<input checked="" type="checkbox"/>	Residenziale - Residential areas Wohngebiete - Zones résidentielles	<input type="checkbox"/>	Zone limitrofe a piscina Swimming pool areas - Schwimmbadbereich Abords de piscines
<input type="checkbox"/>	Esterno - Outdoor areas Außenbereiche - Espaces extérieurs	<input checked="" type="checkbox"/>	Rivestimenti esterni / Pareti ventilate External cladding / Ventilated facade - Außenverkleidung / Hinterlüftete Fassaden Murs extérieurs / Façades ventilées

**WE FEEL GREEN** > 30%  
Elevato contenuto di materiale riciclato  
High content of recycled material - Hoher Anteil an Recycelten Rohstoffen  
Haute teneur en matériaux recyclés

RESISTENTE AL GELO		DRY: >0,40 WET: >0,40	PAG. 544	PAG. 546

	Scatole			Pallet			Spessore Thickness Stärke Épaisseur
	Pz/Sc Pcs/Box Stck/Kart. Pcs/Boîte	Mq/Sc SqM/Box Qm/Kart. M²/Boîte	Kg/Sc Kg/Box Kg/Kart. Kg/Boîte	Colli Boxes Kart Boîtes	Mq SqM Qm M²	Kg Kg Kg Kg	
<b>PAVIMENTI - FLOOR TILES - BODENBELÄGE - CARREAUX SOL</b>							
<b>RIVESTIMENTI - WALL TILES - WANDFLIESEN - FAIENCES</b>							
<b>60x60 - 24"x24"</b>	4	1,44	35	30	43,20	1060	11 mm
<b>30x60 - 12"x24"</b>	6	1,08	26,5	40	43,20	1070	11 mm
<b>10x60 - 4"x24"</b>	11	0,66	16,7	50	33,0	845	11 mm
<b>30x30 - 12"x12"</b>	10	0,90	22,2	48	43,20	1076	11 mm
<b>PEZZI SPECIALI - SPECIAL TRIMS - SONDERSTÜCKE - PIÈCES SPECIALES</b>							
<b>7,5x60 - 3"x24" Battiscopa</b>	22	MI 13,2	33,4				