

ACIKER PLUS





	PORCELÁNICO PORCELAIN	
	ESMALTADO GLAZED	
	Características dimensionales Dimension tolerance	<1% · máx 2 mm.
	Absorción de agua Water absorption	E≤0,5%
	Coef. Dilatación termica lineal Linear thermal expansion coefficient	5,8x10 ⁻⁶ xC ⁻¹
	Resistencia a la flexión Breaking Strength	>43 N/mm ²
	Resistencia a la abrasión profunda Resistance to deep abrasion	132mm ³
	Resistencia a la abrasión superficial Resistance to surface abrasion	Rojo/Gris :PEI 2 Natural: PEI 4
	Resistencia al rayado (método Mohs) Scratch hardness of surface (Mohs Method)	6 a 8
	Resistencia a las manchas Resistance to stains	clase 5 CLASS 5
	Péndulo (CTE) Not required out of Spain	clase 3 CLASS 3
	A pie descalzo Barefoot slip resistance	C
	A pie calzado Slip resistance with footwear	Liso: R10 Ranurado: R11 Celdillas: R12
	Coefficiente fricción dinámico (DCOF) Dynamic coefficient of friction	0,80
	Resistencia al cuarteo Crazing resistance	sí/yes
	Extrusión Extruded tiles	✓
	Resistencia a la helada Frost resistance	✓
	Resistencia al choque térmico Resistance to thermal shock	✓
	Resistencia química Chemical resistance	✓
	Antibacteriano Antibacterian	R>2 Reducción antibacteriana >99 %

Los colores son indicativos Colours are just indicative



ACIKER PLUS

Colores / Colors



Aciker Natural
Natural Aciker



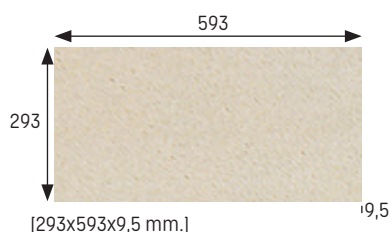
Aciker Rojo
Red Aciker



Aciker Gris
Grey Aciker

Base30x60 Tile 30x60 9,5 mm.

Aciker Natural Natural Aciker Cod. 901709 · [MC520]



Base 30x30 Tile 30x30 9,5 mm.

Aciker Natural Natural Aciker Cod. 902334 · [MC485]



Base 25x25 Tile 25x25 8,5 mm.

Aciker Natural Natural Aciker Cod. 900795 · [MC405]

Aciker Rojo Red Aciker Cod. 903306 · [MC615]

Aciker Gris Grey Aciker Cod. 903311 · [MC505]

Base 25x25 Tile 25x25 14 mm.

Aciker Natural Natural Aciker Cod. 901861 · [MC565]



Base 12x25 Tile 12x25 8,5 mm.

Aciker Natural Natural Aciker Cod. 900603 · [MC405]

Aciker Rojo Red Aciker Cod. 903305 · [MC615]

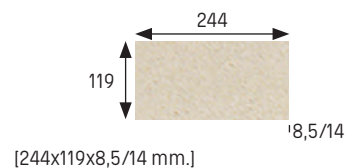
Aciker Gris Grey Aciker Cod. 903310 · [MC505]

Base 12x25 Tile 12x25 14 mm.

Aciker Natural Natural Aciker Cod. 901863 · [MC565]

Aciker Rojo Red Aciker Cod. 901864 · [MC675]

Aciker Gris Grey Aciker Cod. 901865 · [MC645]



Celdillas Aciker Natural
Cell Natural Aciker

Celdillas 25x25 Cell 25x25 8,5 mm.

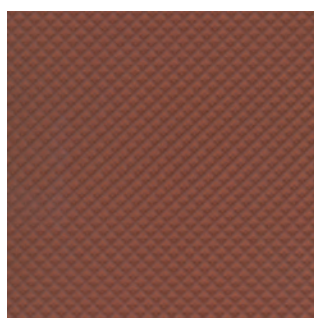
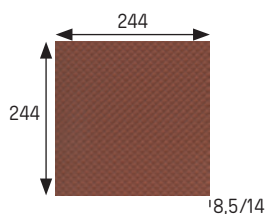
Aciker Natural Natural Aciker Cod. 900610 · [MC490]

Aciker Rojo Red Aciker Cod. 903308 · [MC625]

Aciker Gris Grey Aciker Cod. 903313 · [MC540]

Celdillas 25x25 Cell 25x25 14 mm.

Aciker Natural Natural Aciker Cod. 901862 · [MC600]



Celdillas Aciker Rojo
Cell Red Aciker

Celdillas 12x25 Cell 12x25 8,5 mm.

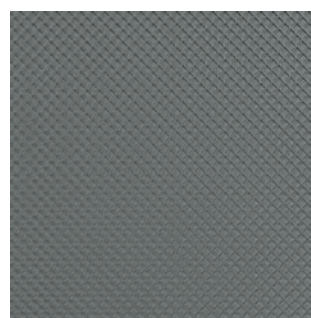
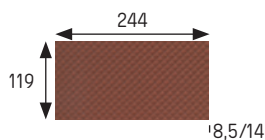
Aciker Natural Natural Aciker Cod. 900684 · [MC490]

Aciker Rojo Red Aciker Cod. 903307 · [MC625]

Aciker Gris Grey Aciker Cod. 903312 · [MC540]

Celdillas 12x25 Cell 12x25 14 mm.

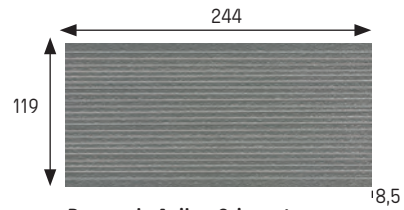
Aciker Natural Natural Aciker Cod. 901866 · [MC600]



Celdillas Aciker Gris
Cell Grey Aciker



Ranurado Natural
Natural Grooved



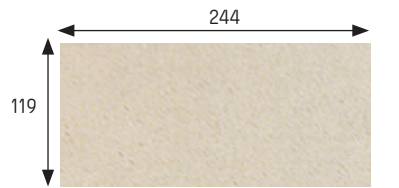
Ranurado Aciker Gris mate
Grooved Aciker Matt Grey

Ranurado Grooved

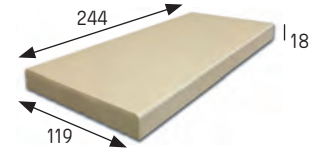
Aciker Natural Natural Aciker Cod. 900694 · [MC550]

Aciker Gris mate Aciker matt grey Cod. 903721 · [MC565]

[244x119x8,5 mm.]



Aciker Natural brillo
Glossy Natural Aciker



Aciker 18 mm. Aciker 18 mm.

Aciker natural brillo Glossy Natural Aciker

8,5 mm Cod. 901717 · [MC405]

[244x119x8,5 mm.]

18 mm Cod. 901867 · [MC690]

[244x119x18 mm.]

	Espesor (mm) Thickness (mm)	U.M.*	U.M./caja U.M./box	U.M./Palet U.M./Pallet	Pzs./U.M. Pcs./U.M.	Pzs./caja Pcs./box	Kg./U.M. Kg./U.M.	Kg./caja Kg./box	Kg./Palet Kg./Pallet
Aciker 30x60 9,5 mm	9,5	m ² sqm	1,08	64,86	5,55	6	19,6	21,2	1270
Aciker 30x30 9,5 mm	9,5	m ² sqm	0,99	71,29	11,11	11	19,8	19,6	1412
Aciker 25x25 8,5 mm	8,5	m ² sqm	1,69	67,5	16	27	19,5	33	1320
Aciker 25x25 14 mm	14	m ² sqm	1	40	16	16	30,4	30,4	1216
Aciker 12x25 8,5 mm	8,5	m ² sqm	1	80	32	32	18,2	18,2	1459
Aciker 12x25 14 mm	14	m ² sqm	0,59	47,5	32	19	30,7	18,2	1460
Celdillas 25x25 8,5 mm Cell 25x25 8,5 mm	8,5	m ² sqm	1,69	67,5	16	27	17,6	29,7	1189
Celdillas 25x25 14 mm Cell 25x25 14 mm	14	m ² sqm	1	40	16	16	30,4	30,4	1216
Celdillas 12x25 8,5 mm Cell 12x25 8,5 mm	8,5	m ² sqm	1	80	32	32	18,4	18,4	1469
Celdillas 12x25 14 mm Cell 12x25 14 mm	14	m ² sqm	0,59	47,5	32	19	30,7	18,2	1459
Ranurado 12x25 Grooved 12x25	8,5	m ² sqm	1	80	32	32	16,6	16,6	1331
Aciker 18 mm	18	m ² sqm	0,47	37,5	32	15	38,7	18,2	1452

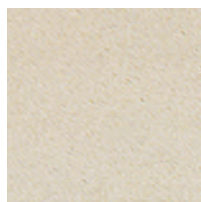
*Unidad de Medida. Los artículos medidos en M² o ML se sirven contando la junta normal entre piezas

*Unit of measure. Items measured in SQM or LM are delivered assuming average joint between pieces

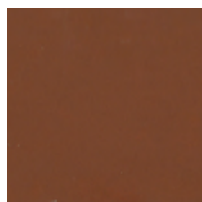
ACIKER PLUS

Piezas especiales Special pieces

Colores / Colors



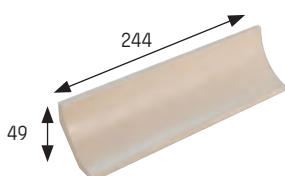
Aciker Natural
Natural Aciker



Aciker Rojo
Red Aciker



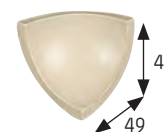
Aciker Gris
Grey Aciker



Media caña interior
Internal radial tile



Media caña exterior
External radial tile



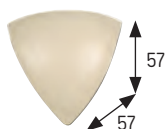
Escocia interior
Round internal mitre

Natural / Natural
Rojo / Red
Gris / Grey

Cod. 900683 · [PZ075]
Cod. 903817 · [PZ085]
Cod. 902632 · [PZ085]
[244x49 mm.]

Cod. 900699 · [PZ075]
Cod. 903820 · [PZ085]
Cod. 903757 · [PZ085]
[244x57 mm.]

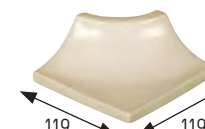
Cod. 900690 · [PZ270]
Cod. 903819 · [PZ080]
Cod. 901608 · [PZ080]
[49x49 mm.]



Escocia exterior
Round external mitre



Esq. media caña interior
Internal mitre



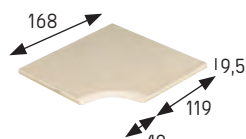
Esq. media caña exterior
External mitre

Natural / Natural
Rojo / Red
Gris / Grey

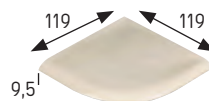
Cod. 900691 · [PZ270]
Cod. 903822 · [PZ080]
Cod. 903763 · [PZ080]
[57x57 mm.]

Cod. 900698 · [PZ320]
Cod. 903818 · [PZ335]
Cod. 901607 · [PZ335]
[119x119 mm.]

Cod. 900697 · [PZ320]
Cod. 903821 · [PZ335]
Cod. 903769 · [PZ335]
[119x119 mm.]



Esq. int. canto romo
Bullnose int. corner



Esq. ext. canto romo
Bullnose external corner



Canto romo
Bullnose

Natural / Natural
Rojo / Red
Gris / Grey

Cod. 900693 · [PZ330]
Cod. 903825 · [PZ350]
Cod. 901712 · [PZ350]
[168x168x9,5 mm.]

Cod. 900696 · [PZ330]
Cod. 903824 · [PZ350]
Cod. 901713 · [PZ350]
[119x119x9,5 mm.]

Cod. 900687 · [PZ055]
Cod. 903823 · [PZ080]
Cod. 901711 · [PZ080]
[244x119x9,5 mm.]



Instalación industrial | Industrial facility

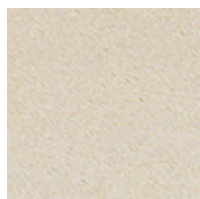
	Espesor (mm) Thickness (mm)	U.M.*	U.M./caja U.M./box	U.M./Palet U.M./Pallet	Pzs./U.M. Pcs./U.M.	Pzs./caja Pcs./box	Kg./U.M. Kg./U.M.	Kg./caja Kg./box	Kg./Palet Kg./Pallet
Media caña interior Internal radial tile	-	Pz. Pc.	24	1728	1	24	0,5	12,2	881
Media caña exterior External radial tile	-	Pz. Pc.	27	1944	1	27	0,41	11,1	797
Escocia interior Round internal mitre	-	Pz. Pc.	24	-	1	24	0,1	1,9	-
Escocia exterior Round external mitre	-	Pz. Pc.	24	-	1	24	0,1	1,9	-
Esq. media caña int. Internal mitre	-	Pz. Pc.	4	-	1	4	0,33	1,3	-
Esq. media caña ext. External mitre	-	Pz. Pc.	4	-	1	4	0,33	1,3	-
Esq. int. canto romo Bullnose int. corner	9,5	Pz. Pc.	4	-	1	4	0,48	1,9	-
Esq. ext. canto romo Bullnose ext. corner	9,5	Pz. Pc.	4	-	1	4	0,25	1	-
Canto romo Bullnose	9,5	Pz. Pc.	27	1944	1	27	0,57	15,39	1108

*Unidad de Medida. Los artículos medidos en M² o ML se sirven contando la junta normal entre piezas
 *Unit of measure. Items measured in SQM or LM are delivered assuming average joint between pieces

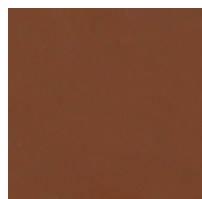
ACIKER PLUS

Piezas especiales Special pieces

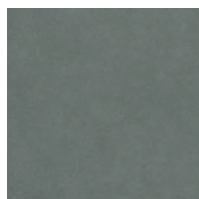
Colores / Colors



Aciker Natural
Natural Aciker



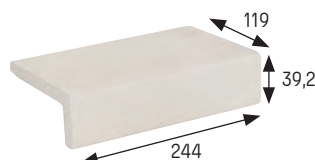
Aciker Rojo
Red Aciker



Aciker Gris
Grey Aciker

Angulo desigual Angle different sides

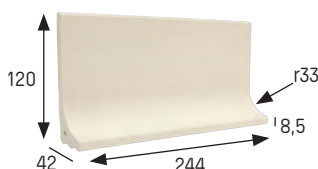
Natural / Natural	Cod. 901270 · [PZ210]
Rojo / Red	Cod. 903801 · [PZ235]
Gris / Grey	Cod. 903802 · [PZ330]



[244x119x39,2 mm.]

Rodapié radio 33 Skirting board radius 33

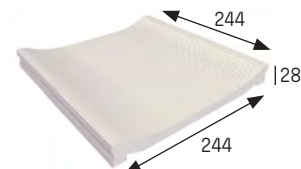
Natural / Natural	Cod. 903254 · [PZ080]
Rojo / Red	Cod. 901740 · [PZ110]
Gris / Grey	Cod. 902477 · [PZ110]



[244x120x42 x8,5 mm.]

Canaleta ranurada 25* Grooved channel 25

Natural / Natural	Cod. 901986 · [PZ340]
Rojo / Red	Cod. 903806 · [PZ355]
Gris / Grey	Cod. 903807 · [PZ355]

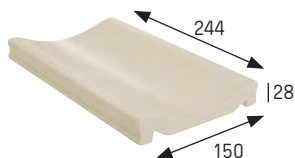


[244x244 mm.]

* Disponible Canaleta con desagüe
* Available Overflow channel with drainage

Canaleta Overflow channel

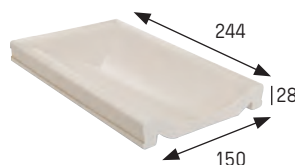
Natural / Natural	Cod. 900659 · [PZ125]
Rojo / Red	Cod. 903339 · [PZ200]
Gris / Grey	Cod. 903340 · [PZ180]



[244x150mm.]

Final de canaleta** End channel piece**

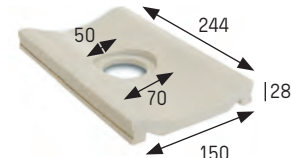
Natural / Natural	Cod. 903640 · [PZ375]
Rojo / Red	Cod. 903637 · [PZ455]
Gris / Grey	Cod. 903636 · [PZ420]



[244x150 mm.]

Canaleta con desagüe Drainage overflow channel

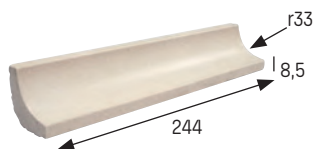
Natural / Natural	Cod. 900660 · [PZ150]
Rojo / Red	Cod. 903343 · [PZ215]
Gris / Grey	Cod. 903344 · [PZ195]



[244x150 mm.]

Rinconera Angle

Natural / Natural	Cod. 903255 · [PZ075]
Rojo / Red	Cod. 903808 · [PZ085]
Gris / Grey	Cod. 903632 · [PZ085]

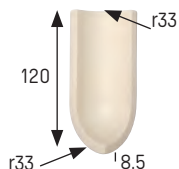


[244x8,5 mm.]

Esquina interior rinconera rodapié

Skirting board angle

Natural / Natural	Cod. 903257 · [PZ350]
Rojo / Red	Cod. 903810 · [PZ355]
Gris / Grey	Cod. 902479 · [PZ355]

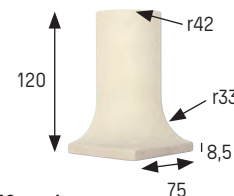


[120x8,5 mm.]

Esquina exterior cantonera rodapié

Skirting board edging

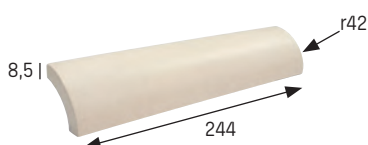
Natural / Natural	Cod. 903258 · [PZ350]
Rojo / Red	Cod. 903814 · [PZ355]
Gris / Grey	Cod. 902478 · [PZ355]



[244x150mm.]

Cantonera Edging

Natural / Natural	Cod. 903256 · [PZ075]
Rojo / Red	Cod. 903812 · [PZ085]
Gris / Grey	Cod. 903631 · [PZ085]



[244x8,5 mm.]



Instalación industrial | Industrial facility

	Esesor (mm) Thickness (mm)	U.M.*	U.M./caja U.M./box	U.M./Palet U.M./Pallet	Pzs./U.M. Pcs./U.M.	Pzs./caja Pcs/box	Kg./U.M. Kg./U.M.	Kg./caja Kg./box	Kg./Palet Kg./Pallet
Ángulo desigual Angle different sides	-	Pz. Pc.	8	576	1	8	0,97	7,7	559
Rodapié radio 33 Skirting board radius 33	8,5	Pz. Pc.	10	720	1	10	0,86	8,6	619
Canaleta ranurada 25 Drainage overflow channel	-	Pz. Pc.	4	72	1	4	2,10	8,4	620
Canaleta overflow channel	-	Pz. Pc.	11	704	1	11	1,32	14,5	930
Final de Canaleta End channel piece	-	Pz. Pc.	**	-	1	**	1,32	**	-
Canaleta desagüe Drainage overflow channel	-	Pz. Pc.	11	-	1	11	1,3	14,5	-
Rinconera Angle	8,5	Pz. Pc.	32	2304	1	32	0,33	10,56	760,32
Esquina interior rinconera rodapié Interior skirting board angle	8,5	Pz. Pc.	6	-	1	6	0,16	0,96	-
Esquina exterior cantonera rodapié Exterior skirting board edging	8,5	Pz. Pc.	4	-	1	4	0,24	0,96	-
Canaleta overflow channel	8,5	Pz. Pc.	40	2880	1	40	0,29	11,60	835,20

*Unidad de Medida. Los artículos medidos en M² o ML se sirven contando la junta normal entre piezas
*Unit of measure. Items measured in SQM or LM are delivered assuming average joint between pieces

** Consultar datos de embalaje con fábrica
** Ask factory for packing information