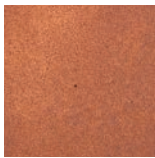


ESMALTADOS CLASSIC

GLAZED TILES CLASSIC

25x25 cm. / 33x33 cm.





Albany Teka



Isla Malta



Parma



Pisa



ESMALTADO
GLAZED



Características dimensionales
Dimension tolerance

<1,25% -
máx 2 mm.



Absorción de agua
Water absorption

3<E≠6%



Coef. Dilatación térmica lineal
Linear thermal expansion coefficient

3,8x10⁻⁶xC⁻¹



Resistencia a la flexión
Breaking Strength

20N/mm²



Resistencia a la abrasión superficial
Resistance to surface abrasion

Teka/Parma/
Pisa PEI 2
Malta PEI 3



Desgaste tránsito peatonal
Erosion to pedestrian transit

Malta H4



Resistencia al rayado (método Mohs)
Scratch hardness of surface (Mohs Method)

Teka/Malta 8



Resistencia a las manchas
Resistance to stains

clase 5
CLASS 5



Péndulo (CTE)
Not required out of Spain

Teka/Parma/
Pisa: 2
Malta: 3



A pie descalzo
Barefoot slip resistance

Teka/Malta C



A pie calzado
Slip resistance with footwear

Teka: R10
Pisa/Malta: R11
Parma: <R9



Resistencia al cuarteo
Crazing resistance

si/yes



Extrusión
Extruded tiles

✓



Resistencia a la helada
Frost resistance

✓



Resistencia al choque térmico
Resistance to thermal shock

✓



Resistencia química
Chemical resistance

✓



ESMALTADOS CLASSIC GLAZED TILES CLASSIC

25x25 cm./ 33x33 cm.

Colores / Colors



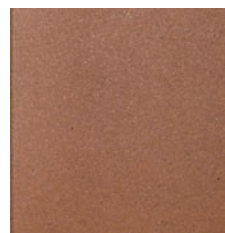
Albany Teka



Isla Malta



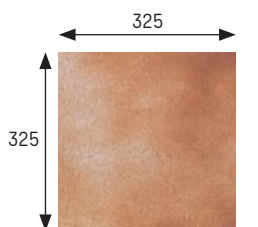
Parma



Pisa

Base 33x33 Tile 33x33

Albany Teka Cod. 901361 · [MC485]



[325x325x16 mm.]

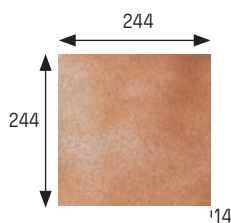
Base 25x25 Tile 25x25

Albany Teka Cod. 900897 · [MC425]

Isla Malta Cod. 901211 · [MC425]

Parma Cod. 902830 · [MC425]

Pisa Cod. 901610 · [MC425]



[244x244x14 mm.]

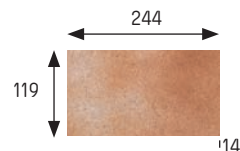
Base 12x25 Tile 12x25

Albany Teka Cod. 901597 · [MC425]

Isla Malta Cod. 903831 · [MC425]

Parma Cod. 902831 · [MC425]

Pisa Cod. 901611 · [MC425]



[119x244x14 mm.]

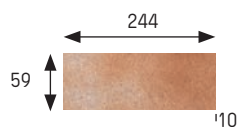
Base 6x25* Tile 6x25*

Albany Teka Cod. 902191 · [MC470]

Isla Malta Cod. 902948 · [MC470]

Parma Cod. 903832 · [MC470]

Pisa Cod. 903553 · [MC470]



[59x244x10 mm.]

*Se obtiene a partir de base de 12x25 premarcada
*(It is obtained from 12x25 pre-marked tile)

	Espesor (mm) Thickness (mm)	U.M.*	U.M./caja U.M./box	U.M./Palet U.M./Pallet	Pzs./U.M. Pcs./U.M.	Pzs./caja Pcs/box	Kg./U.M. Kg./U.M.	Kg./caja Kg./box	Kg./Palet Kg./Pallet
Base 33x33 Tile 33x33	16	m ² sqm	0,666	42,624	9	6	32,6	21,75	1391
Base 25x25 Tile 25x25	14	m ² sqm	1	60	16	16	25	12,5	1499
Base 12x25 Tile 12x25	14	m ² sqm	0,50	60	32	16	25	12,5	1499
Base 6x25 (12x25 premarcada) Tile 6x25 (Permarked tile 12x25)	10	m ² sqm	0,64	76,8	64	40	17	10,640	1276,8

*Unidad de Medida. Los artículos medidos en M² o ML se sirven contando la junta normal entre piezas
*Unit of measure. Items measured in SQM or LM are delivered assuming average joint between pieces

**Consultar datos de embalaje a fábrica según espesor
**Ask factory for packing information depending of thickness



ESMALTADOS CLASSIC GLAZED TILES CLASSIC

Piezas especiales Special pieces

Colores / Colors



Albany Teka



Isla Malta



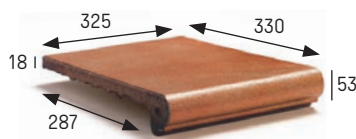
Parma



Pisa

Peldaño 24-33 Stair-tread 24-33

Albany Teka Cod. 901580 · [PZ280]



[325x330x18 mm.]

Peldaño 24-25 Stair-tread 24-25

Albany Teka Cod. 900900 · [PZ220]

Isla Malta Cod. 901212 · [PZ220]

Parma Cod. 902832 · [PZ220]

Pisa Cod. 901612 · [PZ220]



[244x330x18 mm.]

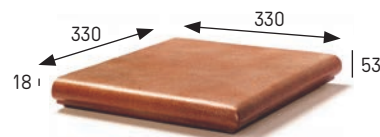
Esquina ref.24 Stair-tread corner ref.24

Albany Teka Cod. 900901 · [PZ555]

Isla Malta Cod. 901214 · [PZ555]

Parma Cod. 902833 · [PZ555]

Pisa Cod. 901617 · [PZ555]



[330x330x18 mm.]

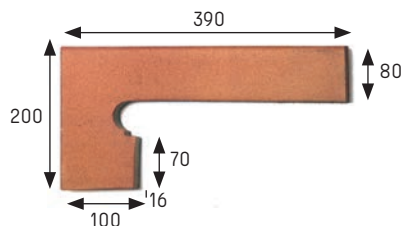
Zanquín izda. String left side

Albany Teka Cod. 900903 · [PZ150]

Isla Malta Cod. 901216 · [PZ150]

Parma Cod. 902834 · [PZ150]

Pisa Cod. 901613 · [PZ150]



[390x80/200x100 x16 mm.]

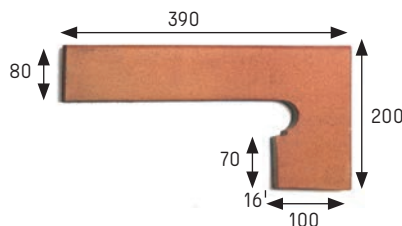
Zanquín dcha. String right side

Albany Teka Cod. 900902 · [PZ150]

Isla Malta Cod. 901215 · [PZ150]

Parma Cod. 902835 · [PZ150]

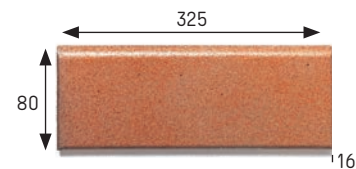
Pisa Cod. 901614 · [PZ150]



[390x80/200x100 x16 mm.]

Rodapié 33 Skirting board 33

Albany Teka Cod. 901582 · [ML170]



[325x80x16 mm.]

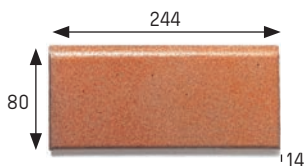
Rodapié 25 Skirting board 25

Albany Teka Cod. 900904 · [ML150]

Isla Malta Cod. 901213 · [ML150]

Parma Cod. 902836 · [ML150]

Pisa Cod. 901615 · [ML150]



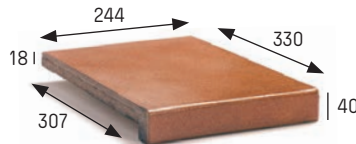
[244x80x14 mm.]

Vierteaguas 25x33 Wash 25x33

Albany Teka Cod. 900994 · [PZ190]

Isla Malta Cod. 901217 · [PZ190]

Parma Cod. 901399 · [PZ190]



[244x330x21 mm.]

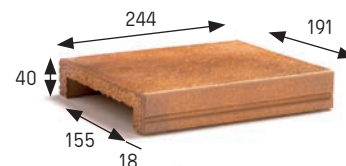
Pasamanos 15,5 Handrail 15,5

Albany Teka Cod. 900950 · [PZ170]

Isla Malta Cod. 901219 · [PZ170]

Parma Cod. 901398 · [PZ170]

Pisa Cod. 903929 · [PZ190]



[244x191x40 x18 mm.]

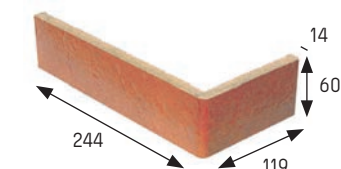
Ángulo fachada Facade angle

Albany Teka Cod. 901464 · [PZ070]

Isla Malta Cod. 901467 · [PZ070]

Parma Cod. 901396 · [PZ070]

Pisa Cod. 903930 · [PZ070]



[244x119x60 x14 mm.]

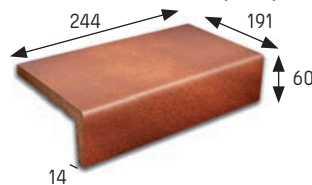
Ángulo desigual Unequal edge

Albany Teka Cod. 900942 · [PZ160]

Isla Malta Cod. 901397 · [PZ160]

Parma Cod. 901594 · [PZ160]

Pisa Cod. 901616 · [PZ160]



[244x191x60 x14 mm.]

Anchura recomendada de la junta de colocación: 6 - 8 mm
A 6 - 8 mm wide installation joint is recommended.



Parma 25x25

	Espesor (mm) Thickness (mm)	U.M.*	U.M./caja U.M./box	U.M./Palet U.M./Pallet	Pzs./U.M. Pcs./U.M.	Pzs./caja Pcs/box	Kg./U.M. Kg./U.M.	Kg./caja Kg./box	Kg./Palet Kg./Pallet
Peldaño 24-33 Stair-tread 24-33	18	Pz. Pc.	6	216	1	6	4,4	26,4	950
Peldaño 24-25 Stair-tread 24-25	18	Pz. Pc.	6	324	1	6	3,3	19,8	1069
Esquina ref. 24 Stair-tread corner ref.24	18	Pz. Pc.	2	60	1	2	6	12	360
Zanquín izda. String left	16	Pz. Pc.	10	300	1	10	1,3	13	390
Zanquín dcha. String right	16	Pz. Pc.	10	300	1	10	1,3	13	390
Rodapié 33 Skirting board 33	16	ml lm	8	576	3	24	2,3	18	1296
Rodapié 25 Skirting board 25	14	ml lm	11,25	450	4	45	2,5	27,7	1108
Vierteaguas 25x33 Wash 25x33	18	Pz. Pc.	6	324	1	6	3,13	18,78	1014
Pasamanos 15,5 Handrail 15,5	18	Pz. Pc.	8	320	1	8	2,3	18,3	731
Ángulo fachada Facade angle	14	Pz. Pc.	16	896	1	16	0,55	8,80	493
Ángulo desigual Unequal edge	14	Pz. Pc.	12	720	1	12	1,2	14,4	864

*Unidad de Medida. Los artículos medidos en M² o ML se sirven contando la junta normal entre piezas
 *Unit of measure. Items measured in SQM or LM are delivered assuming average joint between pieces